

Midwest Governors Association Energy Summit

October 6, 2009

Presenter: Lars Moller
Broadwind Energy

“Wherever you turn, we’ll be there™”



Forward Looking Statement

We make forward-looking statements in this presentation which represent our expectations or beliefs about future events and Broadwind performance. Forward-looking statements are identifiable by words such as “believe”, “anticipate”, “expect”, “plan”, “will”, “may”, and other similar expressions. Forward-looking statements made in this presentation, which relate to possible future offerings of Broadwind products and services and future Broadwind locations, involve known and unknown risks and uncertainties that may cause the actual results to differ materially from those expected and stated in this announcement. Actual results could differ if the economy, and particularly the segments of the economy that impact the Company’s business, does not grow and perform at least as well as forecast. In addition, actual results could differ as a result of (i) incorrect assumptions by management regarding our ability to provide certain products and services or add additional locations in the future, (ii) our ability to successfully remediate internal control deficiencies, (iii) fluctuations in general economic conditions; and (iv) those risks described from time to time in our reports to the Securities and Exchange Commission (including our Annual Report on Form 10-KSB). It is not possible to foresee or identify all factors that could cause actual results to differ from expected or historical results. As such, you should not consider any list of such factors to be an exhaustive statement of all risks, uncertainties or potential inaccurate assumptions. We undertake no obligation to update “forward-looking” statements made during this presentation.

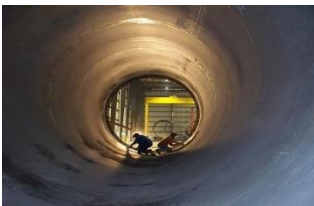
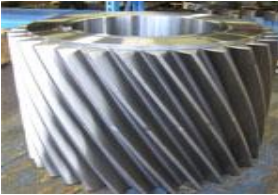
Key Talking Points

- Brief Broadwind Energy overview
- Wind industry data
- Potential action items to consider
- Questions & Answers

Current Companies – full ownership



Precisely.



Wind Turbine
Gear & Bearing
Manufacturer

Wind Turbine
Tower and
Monopile
Manufacturer

Wind Turbine
Service & Repair
Provider

Wind Turbine
Component
Transportation

General Heavy
Steel Fabricator &
Machining

Brief History

- 2004 Tower Tech Holdings forms a public company structure reverse merge
- 2005 1st proto type wind tower
- 2006 2nd and 3rd customers added with serial production of 2MW class towers
- 2007
- 3/07 New shareholder structure and significant capital infusion
- 10/07 Acquisition of Brad Foote Gear Works (founded 1924)
- 10/07 Acquisition of RBA, Inc. (founded 1985)
- 10/07 Corporate structure established and exec. leadership added
- 2008
- 1/08 Acquisition of Energy Maintenance System (EMS)
- 2/08 Corporation changes name to Broadwind Energy
- 6/08 Acquisition of Badger Transport
- 2009
- 2/09 Listed on NASDAQ (ticker: bwen)
- 6/09 Re-structured to expand internationally and value offerings via supply partnerships

Broadwind Mission

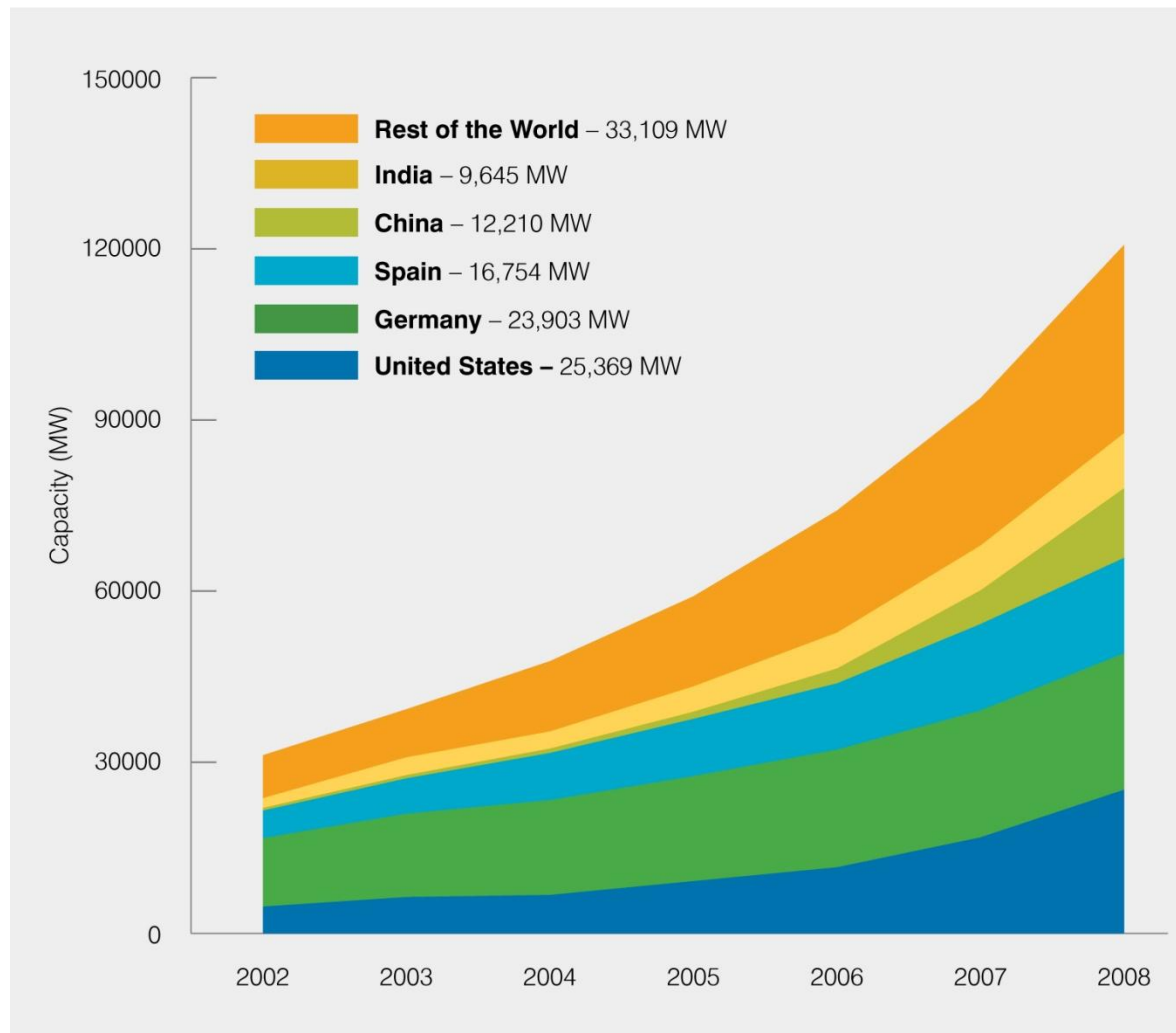
The background features several thick, light blue, wavy lines that flow across the slide, creating a sense of movement and energy. These lines are positioned behind the text, with some overlapping it.

Become a premier component, service and technology provider in the energy industry with a heightened focus on the wind sector

“Wherever you turn, we’ll be there™”

Wind Industry Data Points

U.S. is World Leader in Wind Power

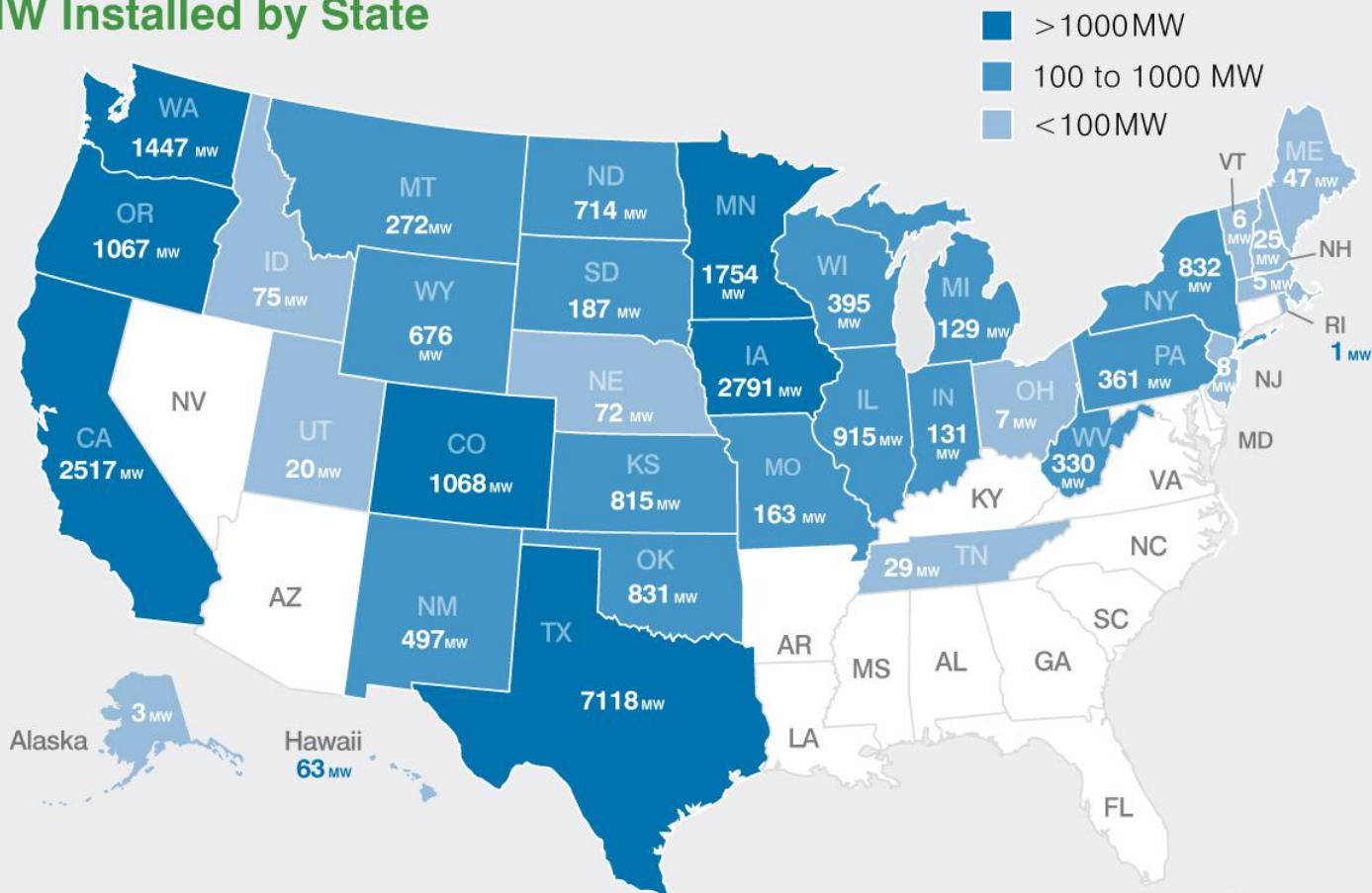


2008: Another Record Year of Growth

- Installed 8,353 MW in 2008
 - Enough to serve over 2 million homes
 - Channeled \$17 billion of economic investment into U.S. economy
- 50% growth in total wind power generating capacity
- Wind power is a leading source of new power generation, along with natural gas
 - Wind provided 42% of new U.S. power producing capacity

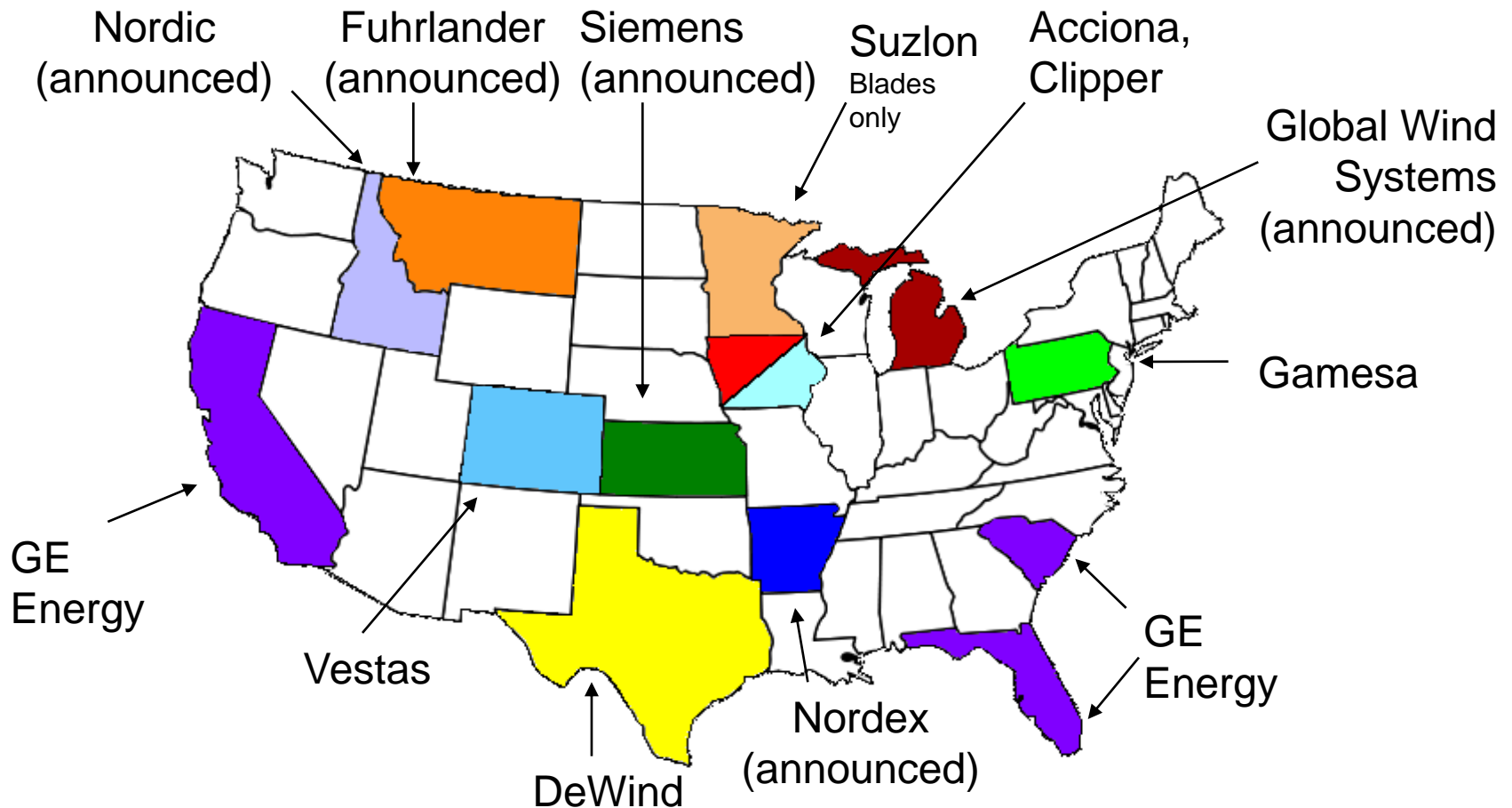
Installed Wind Projects • Year-End 2008

MW Installed by State

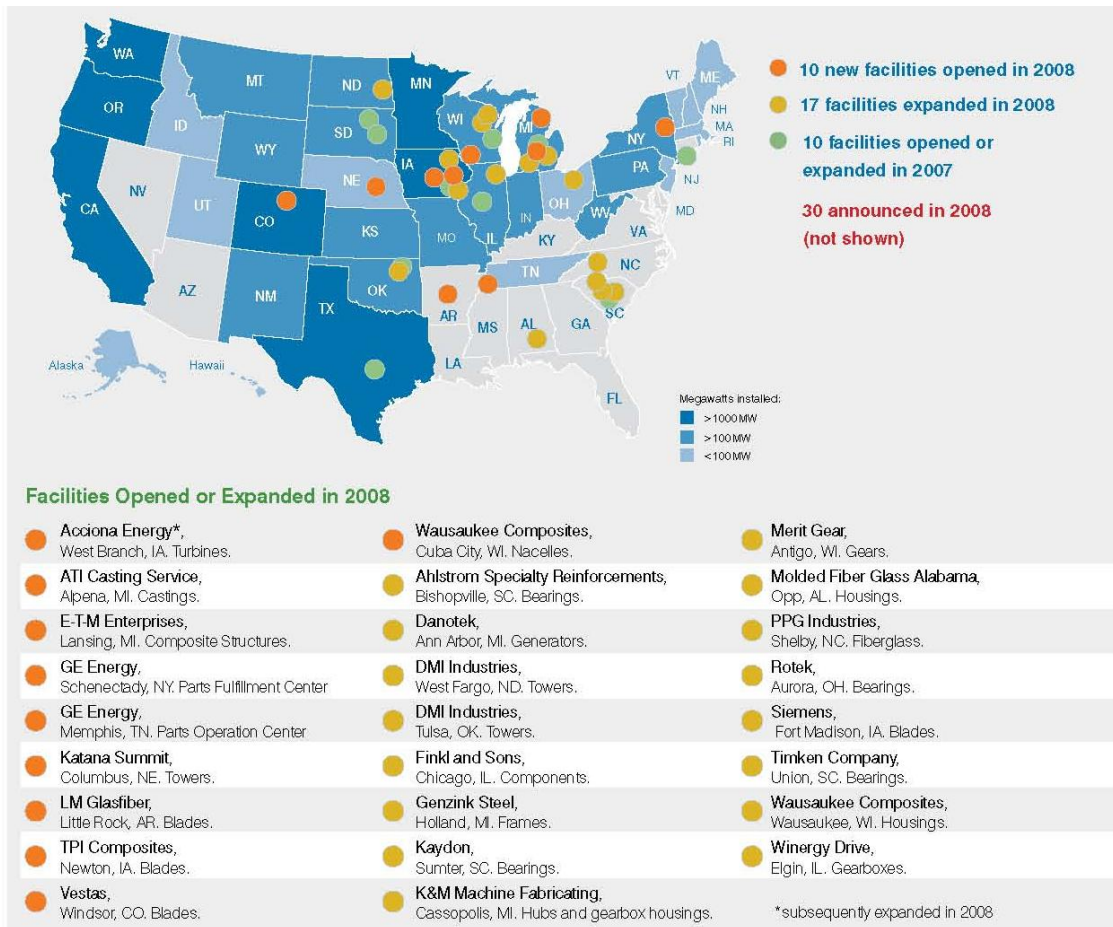


Turbine Manufacturer Locations

Every major manufacturer creates 4-5 times as many jobs down the supply chain as they create in their facilities

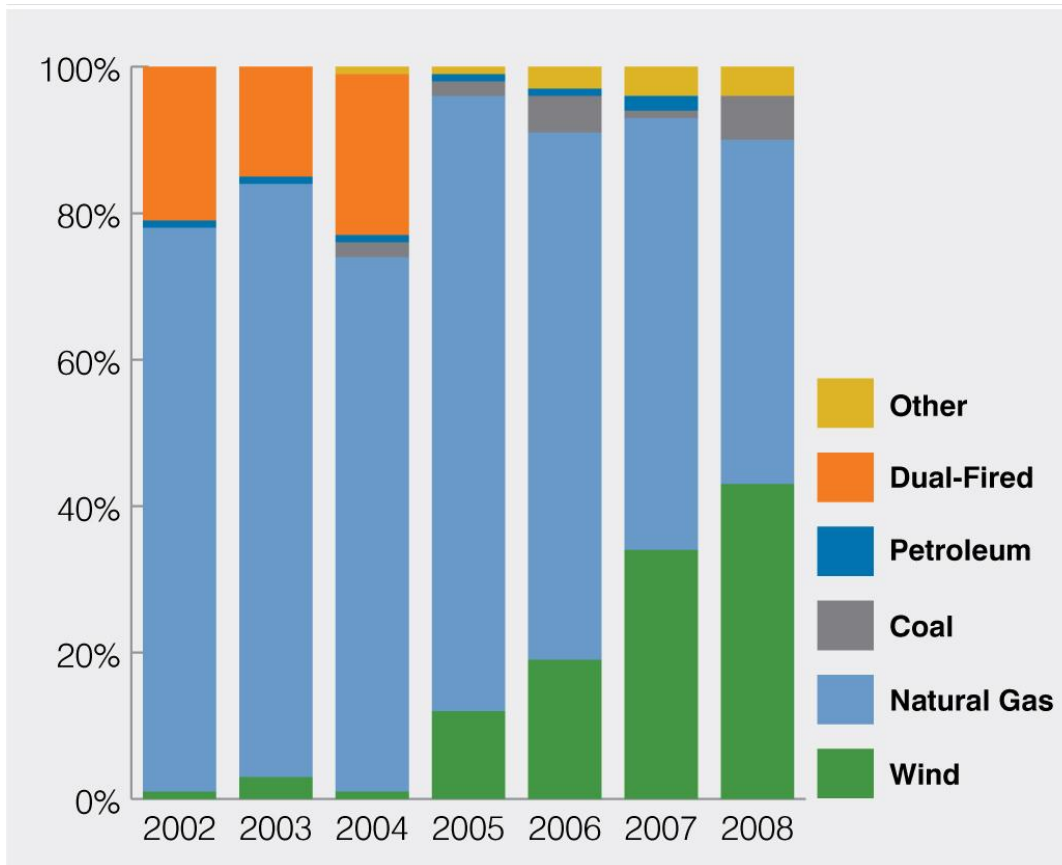


Wind Manufacturing Facilities Across the U.S.



- 55 manufacturing facilities opened, expanded or announced in 2008
- Wind industry now employs 85,000 in U.S.

Percentage of Generation Added by Year



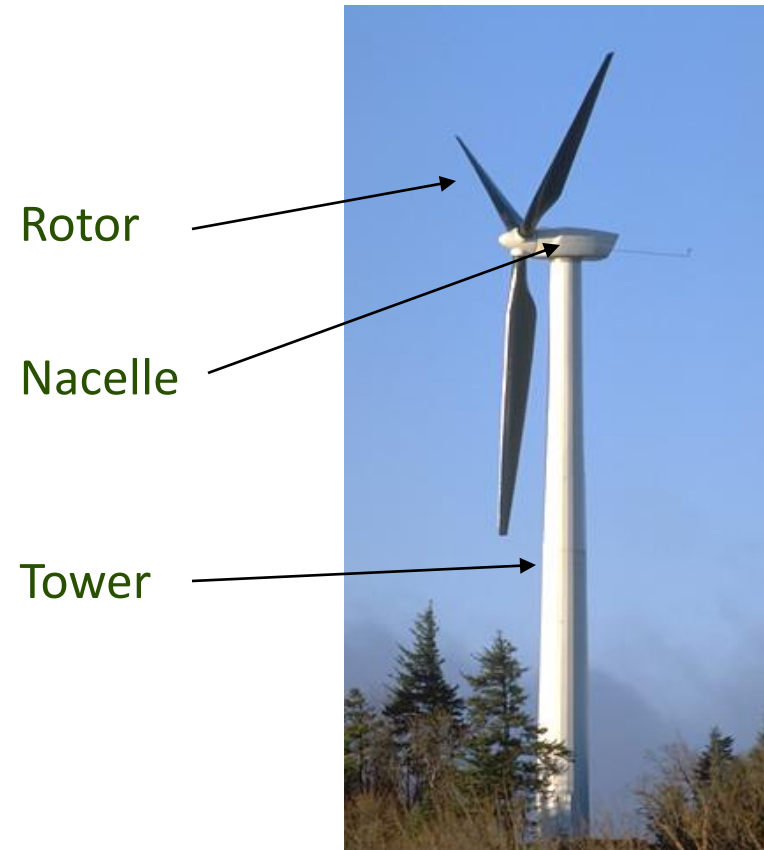
- 42% of all new generating facilities added in 2008 were wind power plants
- Wind second only to natural gas for 4th year in a row

Opportunities in Manufacturing Wind Energy Components

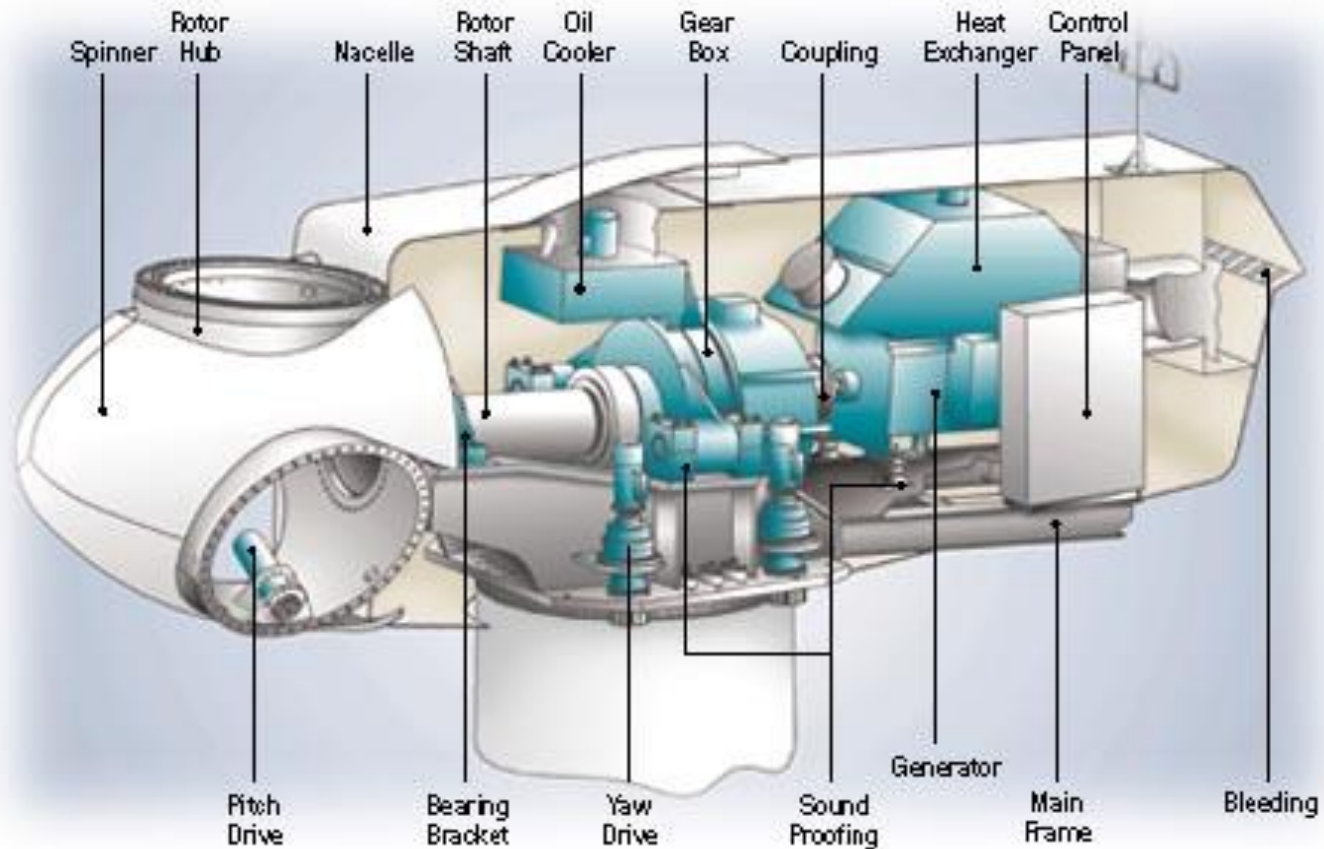
Fundamentals of Wind Power

Turbine subsystems include:

- A **rotor**, or blades, which convert the wind's energy into rotational shaft energy
- A **nacelle** (enclosure) containing a drive train, usually including a gearbox and a generator
- A **tower**, to support the rotor and drive train; and electronic equipment such as controls, electrical cables, ground support equipment, and interconnection equipment.



Inside a Nacelle



Actions for Midwest

- Sound policy makes sound jobs
 - Long-term regional Renewable Portfolio Standards (RPS) with milestones and incentives/penalties
 - Support federal initiatives – Renewable Energy Standards (RES)
 - Embrace and incorporate environmental laws

- Develop uniform project development costs
 - Simplify permitting process
 - Encompass multi-state approach – best practices

- Adjust to competitive soft costs
 - Compare construction and manufacturing sectors to “best”

- Time is of the essence
 - Other states, provinces, countries are doing it
 - It is a global market and industry

Thank you!

“Wherever you turn, we’ll be there™”

