

---

# Grid Security and Resilience: Today and Tomorrow



Jonathon Monken  
Principal, Converge Strategies



**CONVERGE**  
STRATEGIES

---



CONVERGE  
STRATEGIES

We are focused on the intersection of **clean energy, resilience, and national security.**

Our mission is to **integrate resilience and security as first principles** in the clean energy transformation.

ENERGY:  
**A NATIONAL SECURITY  
IMPERATIVE**

# “The Homeland is No Longer a Sanctuary”



## Billions

Of cyber attacks targeting utilities  
across the country every year



## 20+

Physical attacks on grid  
infrastructure in 2022



## 122

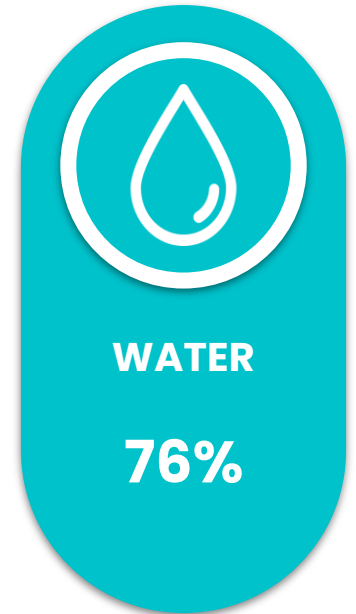
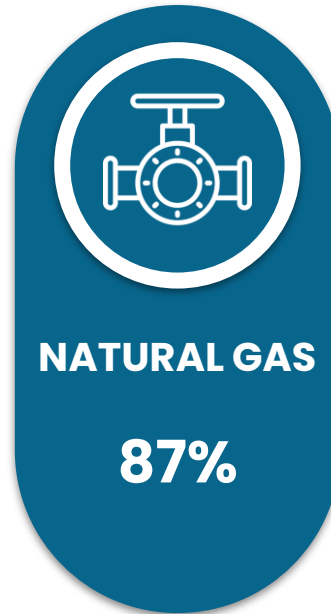
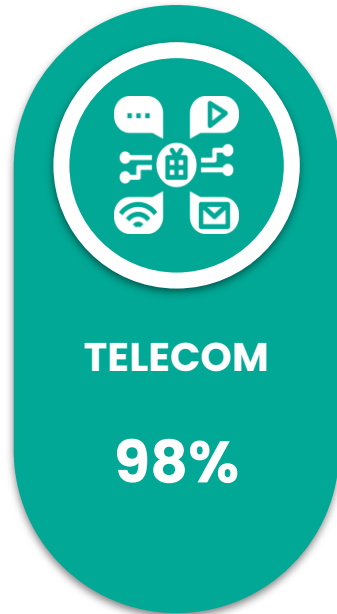
Separate billion-dollar disasters  
resulting in 5,000+ fatalities and  
more than \$1T in damages



# Energy and National Security: Two Sides of the Same Coin

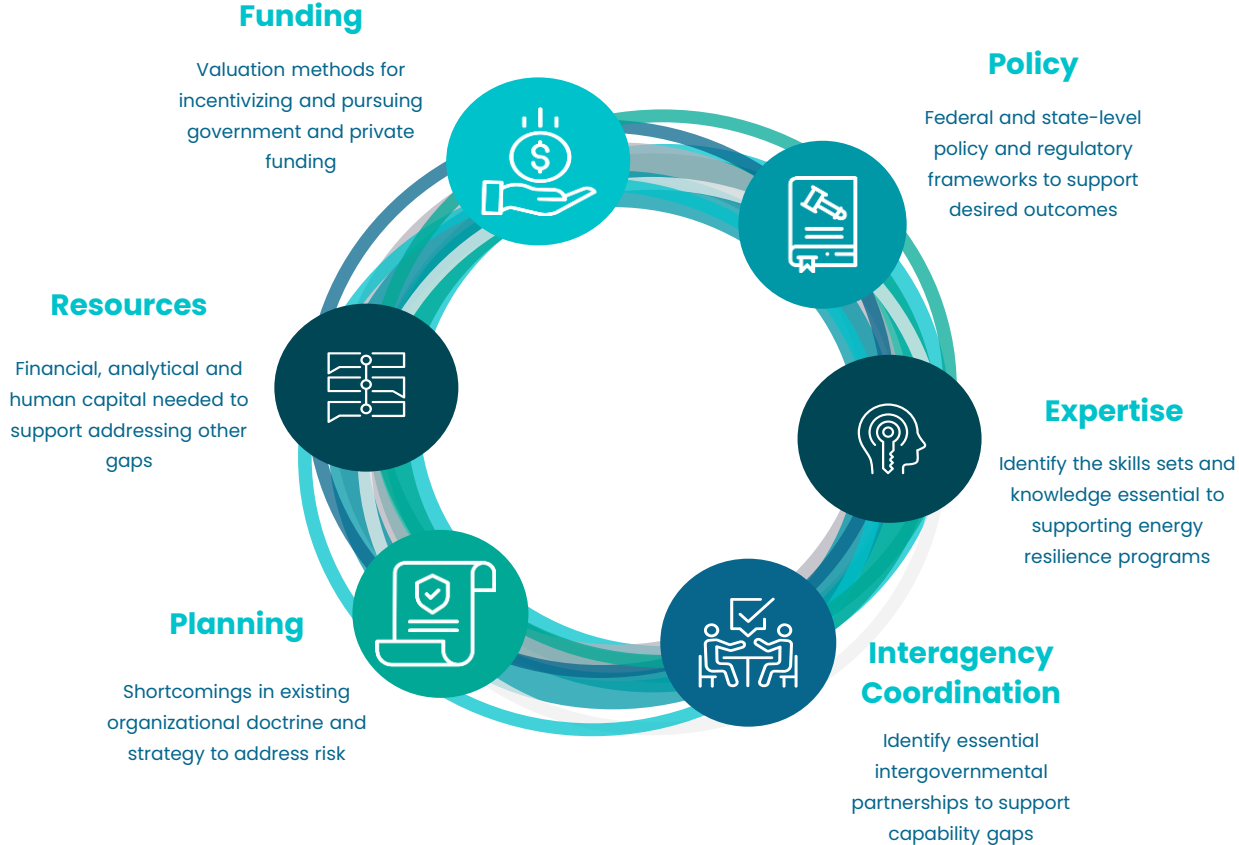


# DoD Bases Are Almost Entirely Reliant On Civilian Infrastructure To Support Critical Missions



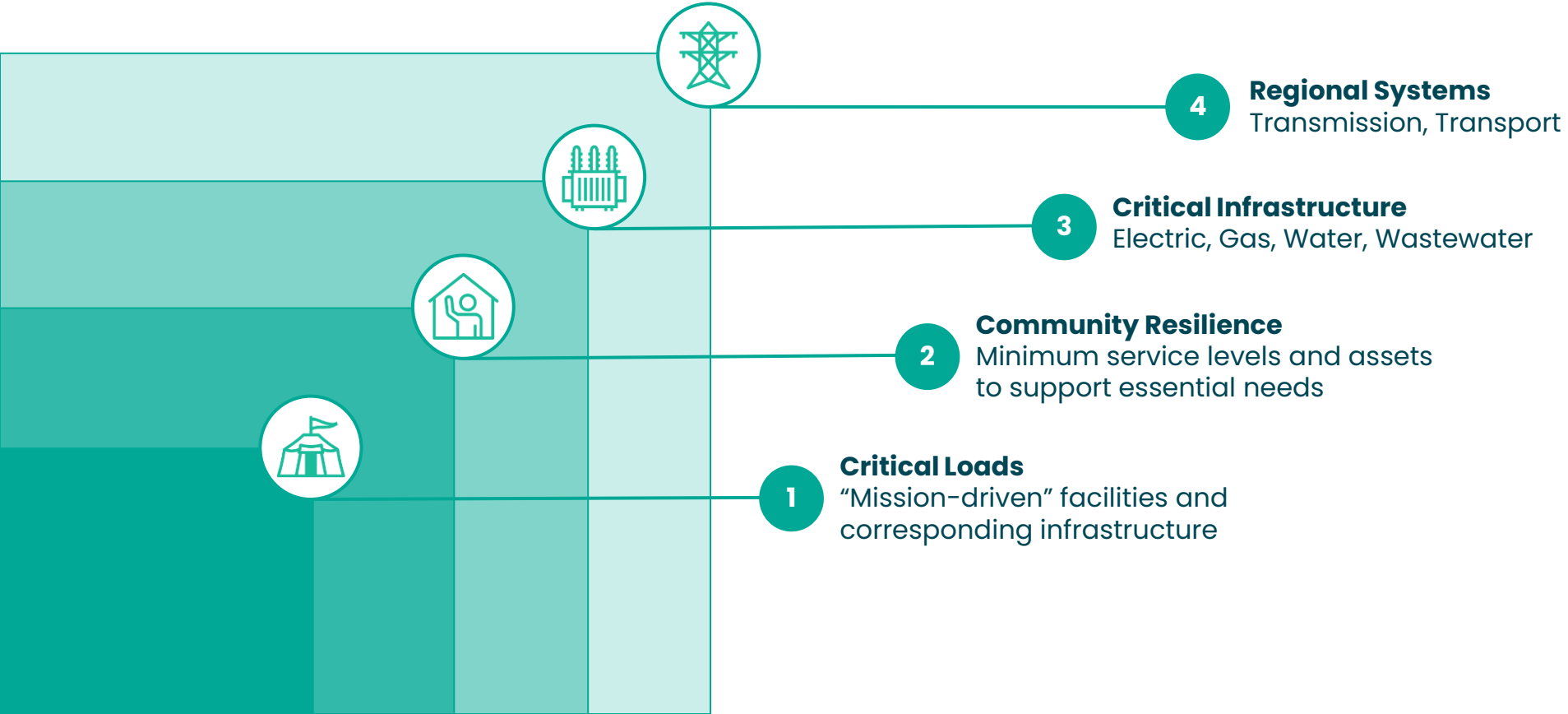
STATES:  
**THE BUILDING BLOCKS OF  
ENERGY RESILIENCE**

# Energy Resilience Strategy: Identifying Gaps





# Energy Resilience is a Layered Approach



THE PATH AHEAD:  
**ACCELERATING THE  
TRANSITION**

# First Things First

## Community Resilience

- FEMA Lifelines
- Critical Infrastructure
- Energy Equity



## Strategies

- State Energy Policy
- Utility Resource Planning
- Infrastructure Grant Applications

## Foundational Documents

- State Energy Security Plans
- State Emergency Operations Plans
- Power Outage Incident Annex
- Threat and Hazard Identification and Risk Assessment

# Rising tide, all boats

1

## MGA STATES ARE STRATEGICALLY POSITIONED

THE INTERSECTION OF MULTIPLE ISOs WITH A WIDE VARIETY OF ENERGY RESOURCES, DOD INSTALLATIONS, AND POTENTIAL ENERGY RISKS

2

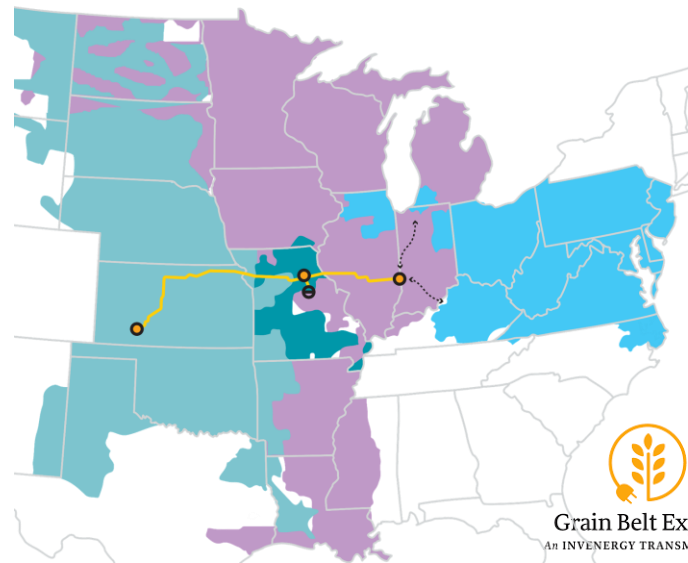
## THIS IS A MULTI-TECHNOLOGY APPROACH

A COMBINATION OF GRID-SCALE ASSETS, DISTRIBUTED ENERGY RESOURCES, HVDC AND AC TRANSMISSION, AND ELECTRIFICATION

3

## HOLISTIC PLANNING IS ESSENTIAL

AD-HOC PROJECTS WITH LIMITED BENEFITS CAN UNDERCUT THE LARGER BENEFITS AND MISS THE RESILIENCE IMPERATIVE



## Ready, set, build



*“The trouble is that the scale of the changes needed to adapt the world’s electricity grids is vastly underappreciated. Too little investment is taking place”*

**Source:** The Economist, April 5th, 2023

# Connect With Converge Strategies



**VISIT**

[www.ConvergeStrategies.com](http://www.ConvergeStrategies.com)



**CONNECT**

Converge Strategies, LLC



**FOLLOW**

[@CnvrgStrategies](https://twitter.com/CnvrgStrategies)



**SUBSCRIBE**

[CSL Newsletter](#)



Washington, DC | Boston, MA