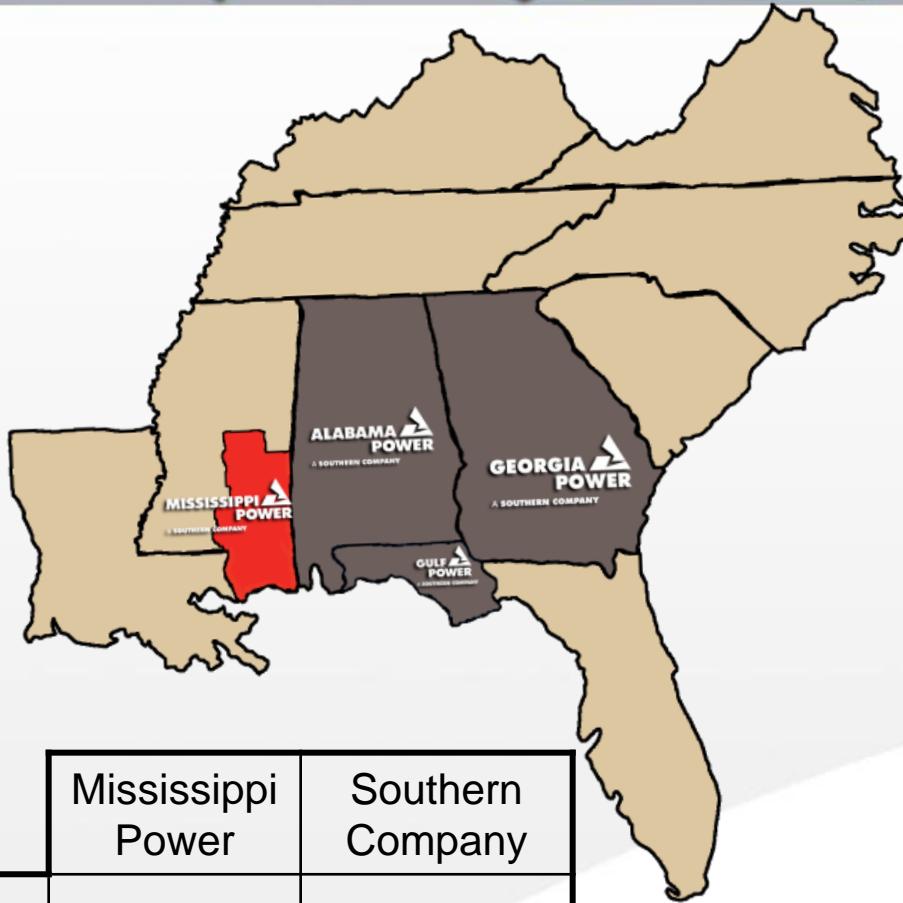


# Kemper County IGCC Project

# Kemper County IGCC Project



	Mississippi Power	Southern Company
Customers	200,000	4.4M
Generating Capacity	3,200MW	42,000MW
Employees	1,200	26,000

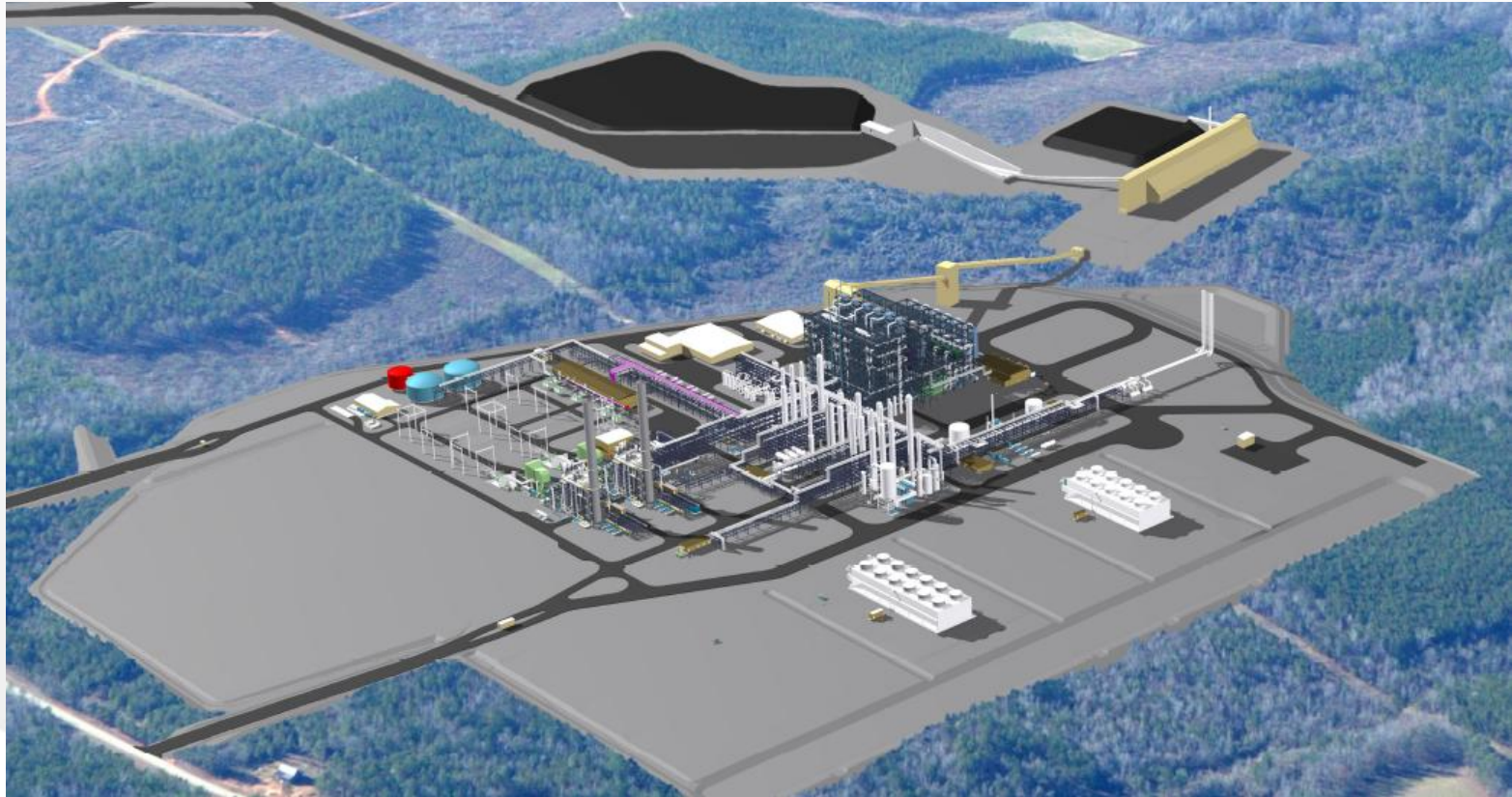
## Southern Style

- Unquestionable Trust
- Superior Performance
- Total Commitment

## Principle Centered Leadership

- Be Proactive
- Begin with the End in Mind
- Put First Things First
- Think Win Win
- Seek First to Understand, Then to Be Understood
- Synergize
- Sharpen the Saw

# Kemper County IGCC Project

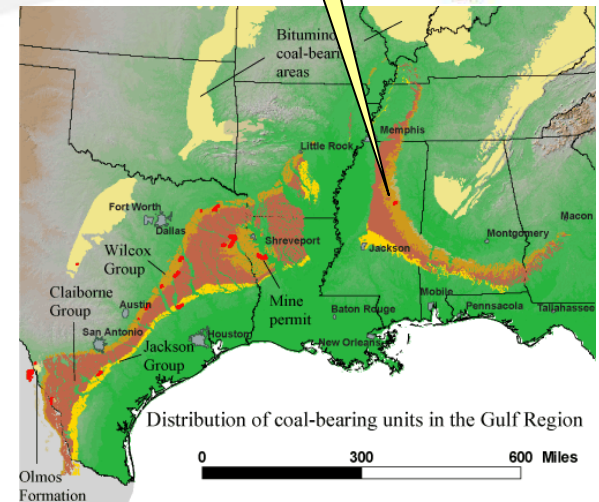




# Kemper County IGCC Project

## The Kemper Project

- **Plant:** 582 MW electric power plant
- **Technology:** TRIG™ Integrated Gasification Combined Cycle (IGCC)
- **Location:** Kemper County, MS, ~20 miles north of Meridian, MS
- **Fuel:** Mine-Mouth Mississippi Lignite, ~4 million tons/year
- **Cost:** \$2.4 billion
- **CO<sub>2</sub> Capture:** 65%, equivalent to natural gas
- **In-service:** May 2014
- **Certificate Approved by Commission:** June 3, 2010
- **Owner & Operator:** Mississippi Power Company
- **Water:** Meridian Treated Effluent
- **Availability:** 58% in 1<sup>st</sup> year increasing to 89% by 5<sup>th</sup> year
- **By- Products:** Sulfuric Acid & Ammonia
- **Construction Jobs:** 2000 peak, 500 average
- **Permanent Jobs:** 80-100 plant, 160-200 mine
- **Key Partners:** SMEPA, NAC, Denbury, Tellus



## Contracting Strategy

### Sitework

Complete	Complete	Complete
<b>Silt Fencing</b>	Timber Removal, Clearing/Grubbing Erosion Control	<b>Earthwork</b>
Lump Sum	Lump Sum	Lump Sum

In Progress	In Progress	In Progress
<b>Piling</b>	<b>Caissons</b>	<b>Undergrounds /Concrete</b>
Unit Price	Unit Price	T&M

↑ Below Anchor Bolts

↓ Above Anchor Bolts

### Awarded 7/5/2011

**Gasifier Island**

---

- Piping/Equip
- Steel
- Electrical

T&M, Fee  
(incentive/penalty)  
[Heavy Civil Focus]

**Gas Cleanup/  
By-Products Island**

---

- Piping/Equip
- Steel
- Electrical

T&M, Fee  
(incentive/penalty)  
[Petrochem Focus]

**Combined Cycle**

---

- Piping/Equip
- Steel
- Electrical

% Fee based on labor hours, E&CS directed

**Cooling Towers: Furnish/Erect, Lump Sum**

**Fuel Handling: Lump Sum**

**Lake: Lump Sum**

**Ash Storage: Lump Sum**

**Meridian Treated Effluent: Lump Sum**

**Buildings: Furnish/Erect, Lump Sum**

**Others: Utilize fixed price where scope is well defined**

● Contract Pkgs

● General Contractor

● Labor Broker

● Construction Management Opportunity

## Education Initiatives

- AABE
  - Two AABE scholarships annually for three years to students from Kemper County area pursuing a career in energy related fields, **four scholarships awarded to date**
- KEEP
  - **Four EMCC scholarships/work programs awarded in May 2011**
  - Sponsored by MPC and NAC
- Tuition Guarantee Program
  - Foundation provides scholarship funds to support the East MS Community College in Kemper, Noxubee and rural Lauderdale counties

## 2010 and 2011 AABE Scholarships



David Buckner, Meridian Area Manager; John Clark III, 2010 AABE Scholar; Hellen Ash, 2010 AABE Scholar; Tamara Proctor, AABE Education Chair; Bernard Hulin, PACES Program Coordinator.



Shanitra Ramsey, 2011 AABE Scholar; Senator Jackson; Tamara Proctor, AABE Education Chair; Jazmine Newell, 2011 AABE Scholar; Mrs. Newell, Jazmine's mother.



## AABE/KEEP 2011 Summer Work Program



Robert, Tallie, KEEP Scholar; Tyler Hoppes, KEEP Scholar; John Clark III, 2010-AABE Scholar; Hellenthal Ash, 2010-AABE Scholar; Heather Davis, KEEP Scholar; Patrick Benoman, KEEP Scholar.



## Partners for Kemper County “a community foundation”

- Long term planning for County prosperity and well-being
- Formed Spring of 2011
- Nine Kemper County resident Charter Board Members
- Diverse and reflective of Kemper County Community
- “Articles of Incorporation” papers filed with the State of Mississippi on February 28, 2011
- IRS “Non-profit Organization” filing submitted March 2011
- Anticipate conditional “Non-Profit status” in 2011

# Kemper County IGCC Project



Deep Foundations

Drilled Shaft  
Caisson

276 of  
988 Installed



# Kemper County IGCC Project



Deep Foundations

Auger Cast Piling

931 of  
3510 Installed



# Kemper County IGCC Project



Concrete  
Foundations

Turbine Generator

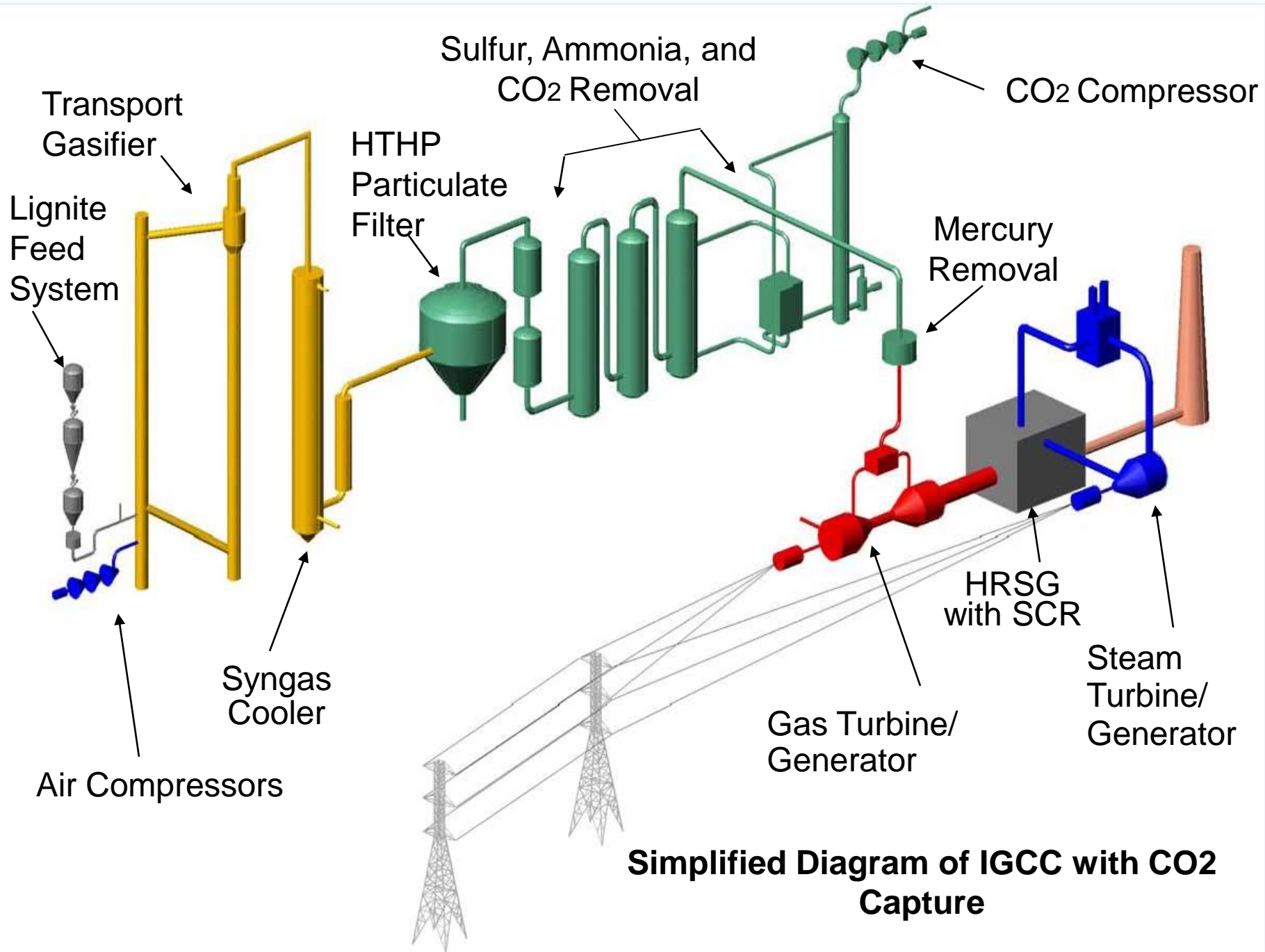


# Kemper County IGCC Project



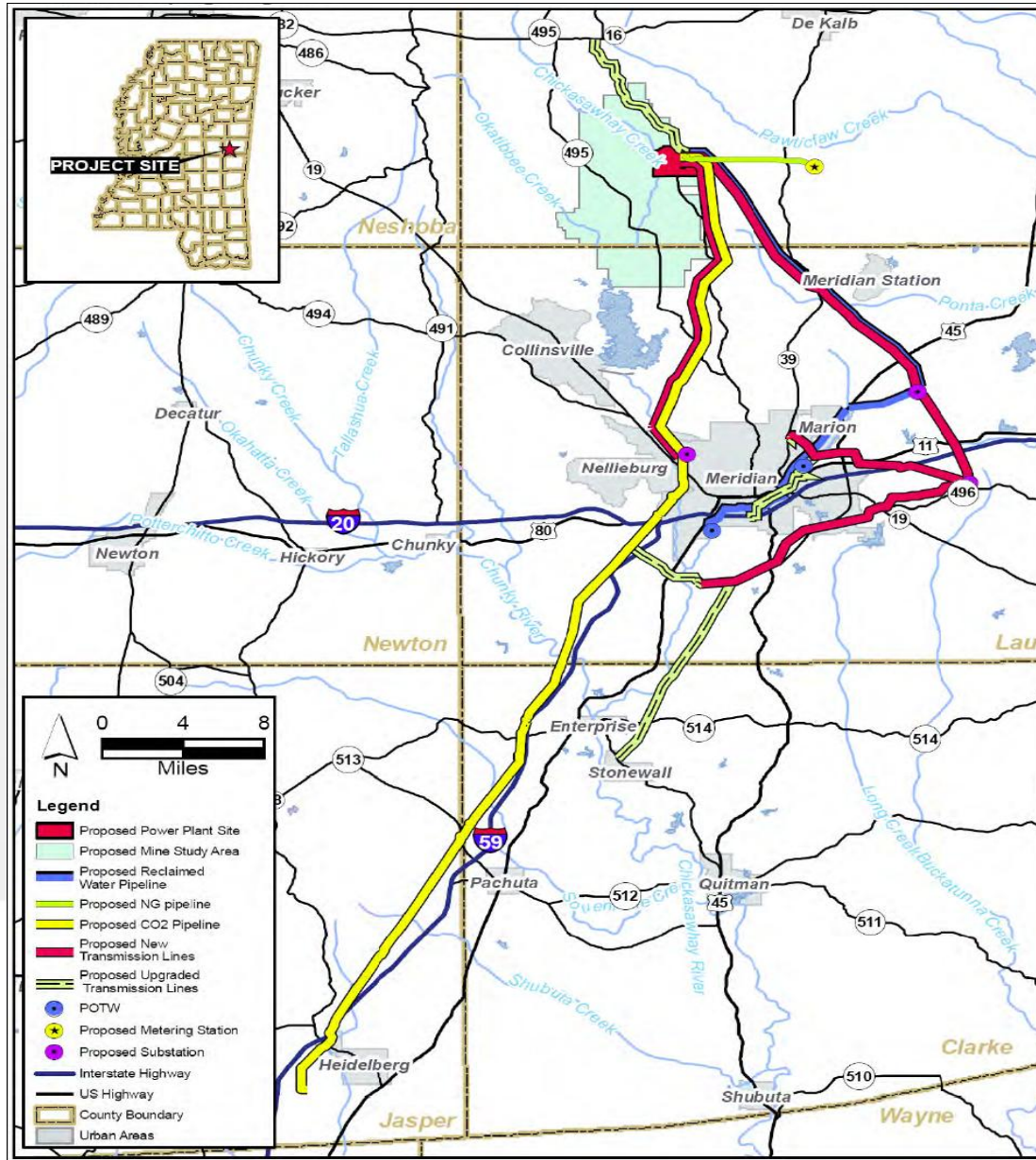
Concrete  
Foundations

HRSG



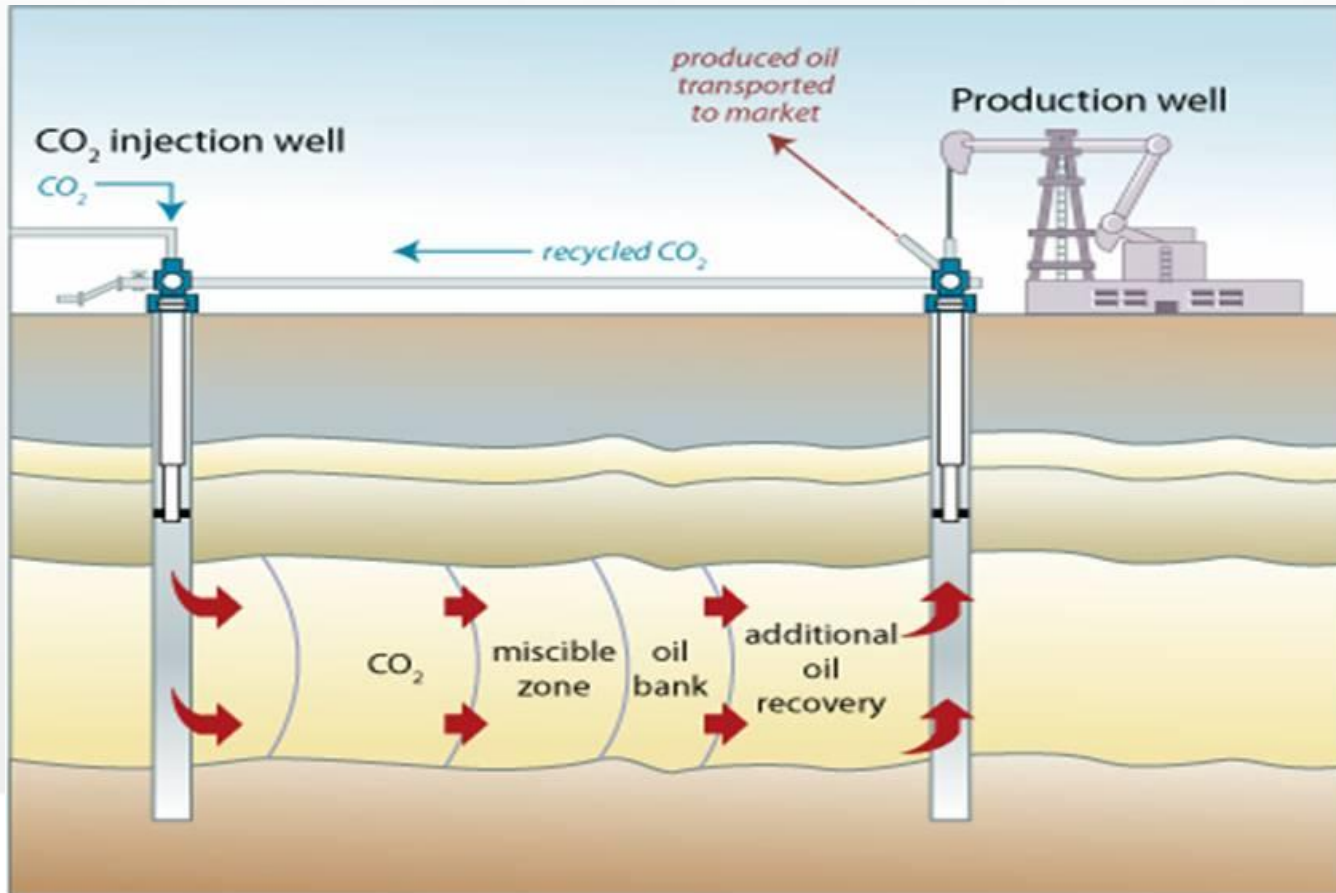


# Kemper County IGCC Project



# Kemper County IGCC Project

## CO<sub>2</sub> Sequestration through Enhaned Oil Recovery



\* *Enhanced Oil Recovery*

# Kemper County IGCC Project

## Coal Gasification with CO<sub>2</sub> capture



CO<sub>2</sub>

CO<sub>2</sub> Sales

Low Cost Energy



Mine-mouth Lignite

Economic Growth



## Enhanced Oil Recovery



Oil Production

