



WHEN TRUST MATTERS

The Imperative for Community Engagement

To Advance a Reliable and Resilient Grid Infrastructure

MGA Conference 2024

Mid Grid 2035 Priority: Siting, Landowners and Community Impacts

October 2 2024

Cici Vu

Associate Director,
Energy and Climate Equity
DNV Energy Insights

“Bridging the Technical and Human Dimensions



Research + Projects

12 years
Large infrastructure
Multi-stakeholder
consensus and
mediation



Community Immersion

Toxic Tours
Public housing
Rural
Tribal



Lived Experience

Firsthand energy
burdens

About DNV

DNV is an independent expert in quality assurance and risk management focused on advancing energy transition

Purpose-driven to safeguard life, property, and the environment

Empower clients and stakeholders with facts so critical decisions can be made with *confidence* and *trust*.



Imperative for Prioritizing Community Engagement

378 renewable energy projects face community opposition in **47** states.

June 2024 Sabine Center

Average sunk **costs** between \$2M - \$7.5M for large-scale renewable projects.

Jan 2024 Berkeley Lab survey

75% developers agree increased engagement results in fewer project cancellations and delays

Jan 2024 Berkeley Lab survey

Strategic Pathways to Addressing Imperative

- ❖ ADAPTIVE 4 Engagement
- ❖ PACE Best Practices

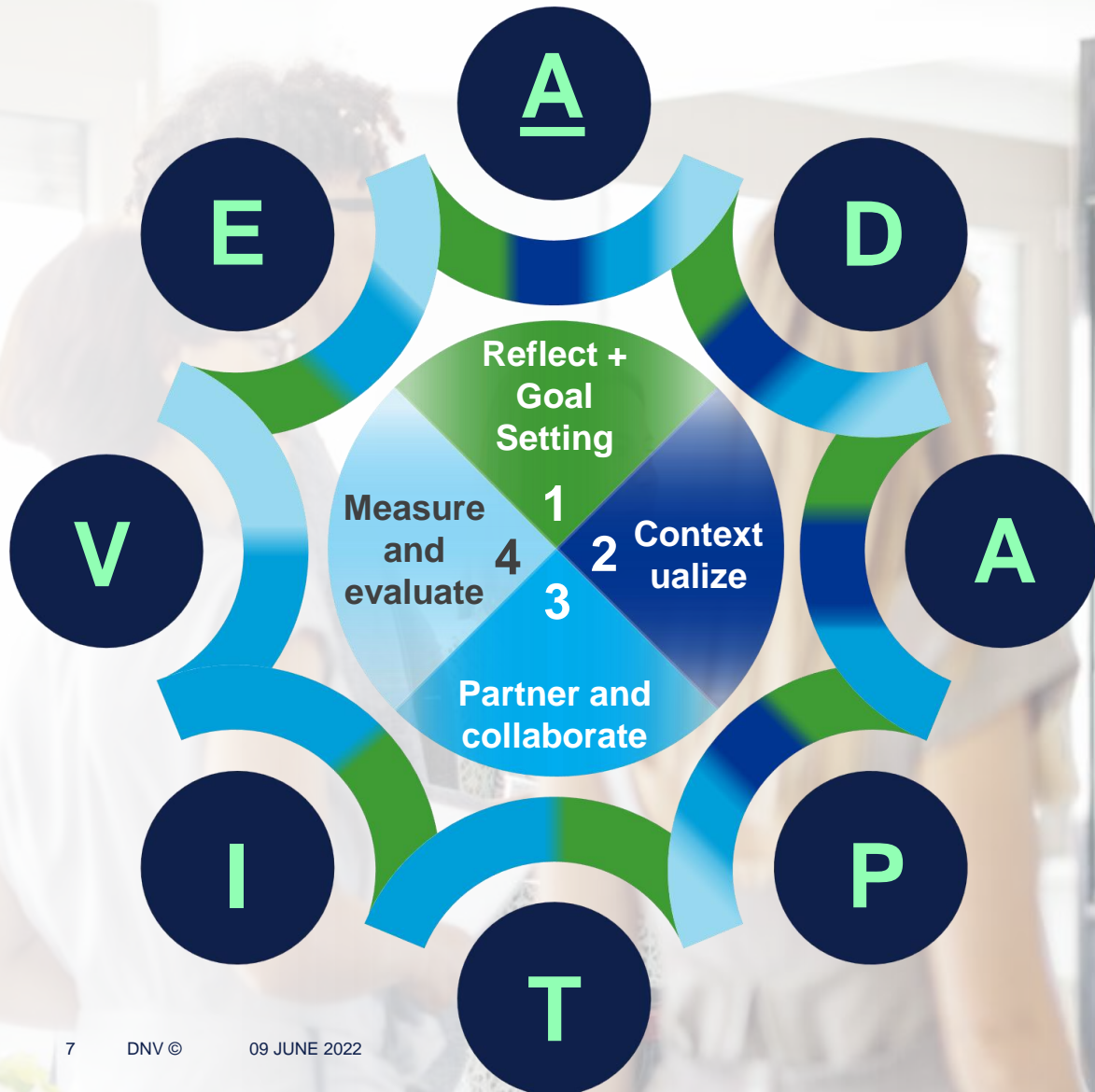
“...the volume and nature of the restrictions and controversies reported...demonstrate local opposition to renewable energy is widespread and growing and that represents a potentially significant impediment to achievement of climate goals...”

June 2024 Sabine Center



ADAPTIVE 4 Engagement

ADAPTIVE 4 Engagement (A4E) | Process + Principles



Adapt to Community + Developer Context
(Pillars: 1, 2, 3, 4)

Trust = Time, Transparency
(Pillars: 1, 3)

Diverse interests
(Pillars: 1, 2, 3, 4)

Iterative feedback loop
(Pillars: 1, 3)

Accessibility
(Pillars: 1, 2, 3)

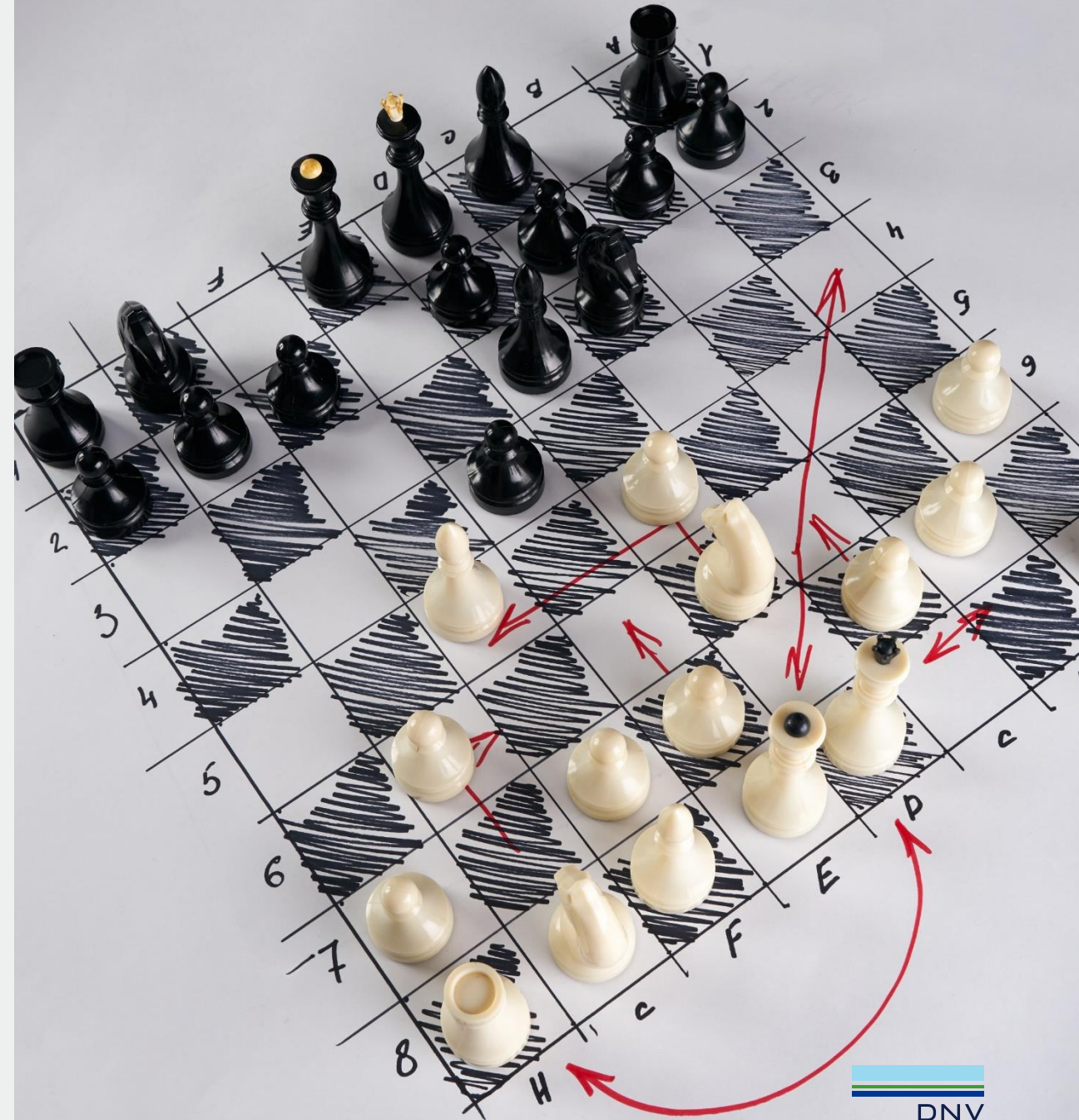
Validate + verify assumptions + data
(Pillars: 3, 4)

Process design as a foundation
(Pillars: 1, 2, 3, 4)

Empower community voices
(Pillars: 1, 3, 4)

A4E Strategies

- Integrated planning
- Interest-based problem solving
- Consensus building
- Mutual gains
- Community assessment + mapping
- Community benefits process
- Root cause analysis
- Active listening + mediation
- Cumulative impacts analysis
- Restorative [environmental] justice
- Feedback Loops
- Case studies
- Surveys and input mechanisms



Adapt to Community *and* Developer Context

Community context :

- Community landscape assessment/mapping
 - Cultural factors and resources
 - Historical/cumulative impacts
 - Interests + positions
 - Accommodations + accessibility needs
 - Opposition and litigation history
 - Players

Strategies:

Integrated and Interest-based Planning,
Community benefits

Developer context:

- Regulatory and/or legislative mandates
- Organizational culture, values + expectations
- Business case
- Relationship to community
- Staffing
- **Budget**
- Time



Accessibility

- Spoken Language
- Technical and industry jargon
- ADA needs
- Land acknowledgment
- Technology access
- Visual aids
- Compensation

Strategies: Active listening, surveys

Translating Technical Jargon

“We would like to share information about a Gas Demand Response Hybrid Heating Pilot with you.”

“We would like to share information about a program we are trying out, to show you how switching between gas and electric energy in your home, at certain times can help improve your comfort and potentially reduce your energy bill.”

“Kilowatt-hour”

“Amount of electric energy used to keep a 1,000-watt appliance running for an hour.”



Diverse Interests

- Lived experience
- Cultural knowledge
- Varied backgrounds, skills + perspectives
- Community connections

Resulting benefits:

- Minimizes conflict during implementation
- Streamlined decision making
- Increased ownership and commitment
- Greater legitimacy and acceptance
- Ground truthed, fair and harmonious outcomes
- Innovative and joint solutions
- Shorter timeline

The PACE of Trust

A framework by community voices advancing transmission

The PACE of Trust

A framework by community voices advancing transmission

Participation & engagement of communities

1. Community-led partnership & community-based collaboration
2. Early, equitable and inclusive engagement
3. Tribal inclusion & engagement

Accountability & good governance

4. Community Benefit Advisory Boards (CBABs)
5. Ombudsman offices at RTPOs
6. Establish a framework for impact assessments

Communication, transparency & trust

7. Resource hubs
8. Two-way learning
9. Multi-channel communication

Economic & non-economic benefits

10. Community benefit plans and community benefit agreements
11. Equitable and responsive financial/resource support
12. Local workforce development

PACE Transmission Roundtable Interests



Agriculture and Landowners
Environmental Advocacy
Energy, Climate and Environmental Justice
Indigenous
Labor Union
Local and Regional Interests
Local Workforce Development
PUC/Transmission Siting Authority
Transmission/Renewable Energy Developer
Utility

PACE Highlights

- Pre-work
- Defines each Interest
- Consensus-based
- Recommendations are timebound
- Opportunity: integrated, early and ongoing engagement
- Challenge: achieving and sustaining broad support

Outlook

- Given current developer responsiveness to improving engagement, PACE provides specific and actionable guidance and feedback.
- As agencies improve siting and permitting, pre-application work is critical. PACE could be key to reducing judicial review timeline
- PACE findings will be released and shared broadly with those who administer those processes (e.g., the Hill, FERC backstop, states)
 - Estimated release: late October!

Facilitation Team

DNV



Cici Vu, Assoc Dir - Energy + Climate Equity has deep experience convening, mediating, evaluating and facilitating equitable and inclusive processes for politically and data-driven complex environmental, social, and large-scale, collaborative programs, infrastructure projects and policies.



Dr. Morgan Putnam, Head - Transmission Development, also advises the NextGen Highways initiative, which he founded. In various roles, Morgan has been instrumental in pioneering products and policies at the forefront of the energy transition.



Olivia Ripps, Professional Consultant, manages and advises clients on ESG emerging trends, due diligence, policy, and strategy. Olivia has ESG experience in reporting, standards and frameworks, research, and consulting for public companies, investors, and developers.



Khadija Holder, Project Consultant blends a background in sustainability and market research with national/international experience supporting energy studies. Leveraging a strong foundation in project management, she actively contributes to insights, strategies and solutions for a cleaner future.



Alison Cyr, Project Coordinator is a flexible resource in DNV's Markets department. She coordinates key players with the resources they require to be effective in their day-to-day work.

Advisory Team

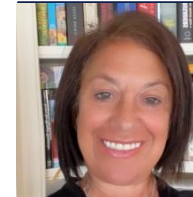
ACEG



Christina Hayes, Exec Director, brings nearly two decades of expertise as an energy regulatory attorney. She has played pivotal roles in addressing transmission development and market issues, navigating federal agencies, and spearheading clean energy initiatives.



Sarah Shinton, Research Associate, combines a background in electricity regulatory law with energy markets and security. Sarah provides programmatic and research support to ACEG.



Elisabeth Blaug has deep expertise in energy infrastructure development and environmental law, particularly in NEPA implementation, as a former attorney at FERC and CEQ. Drawing of her decades worth of experience, she now consults on transmission development.



Nils Nichols has extensive experience from his career at FERC in federal permitting and environmental issues, specializing in pipeline regulation. Since leaving the Commission, he now consults on transmission development and natural gas leasing.

In Closing...

Thank you!

Cici Vu, Associate Director, Energy & Climate Equity

Cici.vu@dnv.com

www.dnv.com



Questions