

# ILLINOIS & RENEWABLE ENERGY SITING

Kate McCormick  
Assistant Director, Policy  
Illinois Commerce Commission  
[Katharine.mccormick@illinois.gov](mailto:Katharine.mccormick@illinois.gov)  
9/25/2023




## DISCLAIMER

This slide deck and its contents are intended for informational and discussion purposes only and do not represent a legal interpretation or statement of policy by the ICC or its Staff.

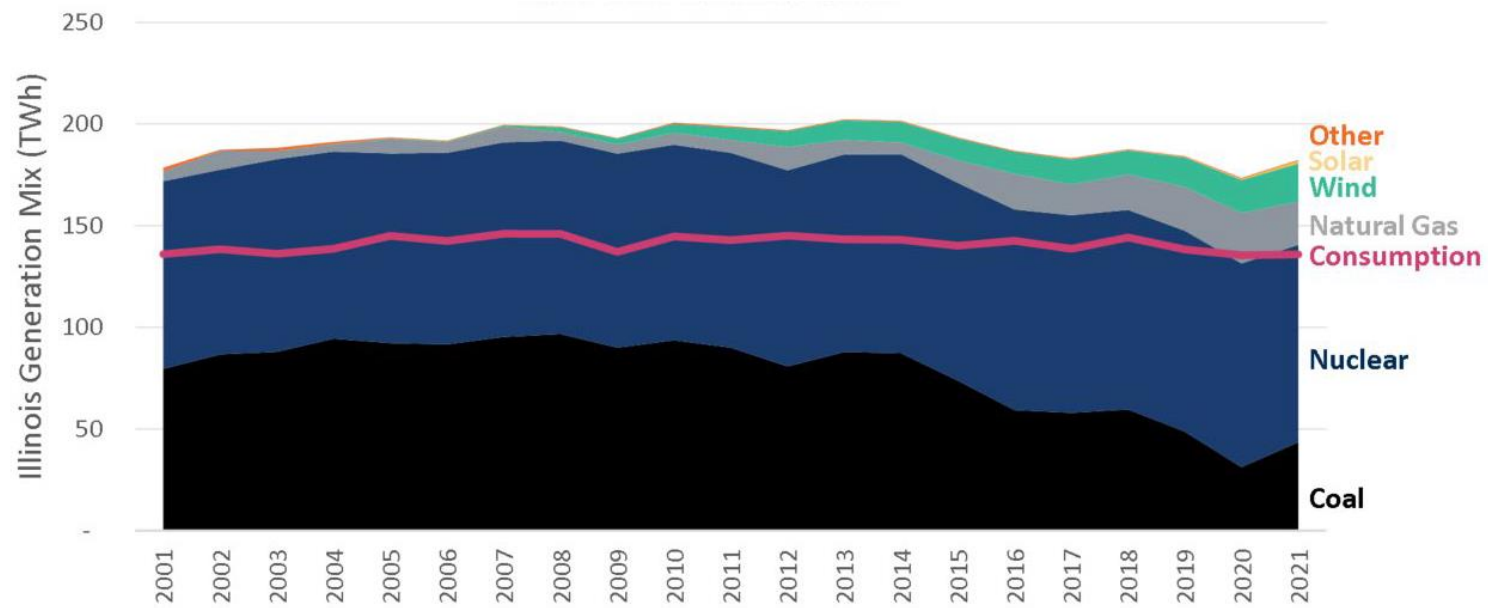
CEJA Enactment - Public Act 102-0662, commonly referred to as the Climate and Equitable Jobs Act or CEJA, was enacted by the General Assembly with an effective date of September 15, 2021. CEJA can be found at <https://www.ilga.gov/legislation/publicacts/102/PDF/102-0662.pdf>.

CEJA Implementation Webpage: The Illinois Commerce Commission's implementation activities related to CEJA can be found at: <https://www.icc.illinois.gov/programs/climate-and-equitable-jobs-act-implementation>

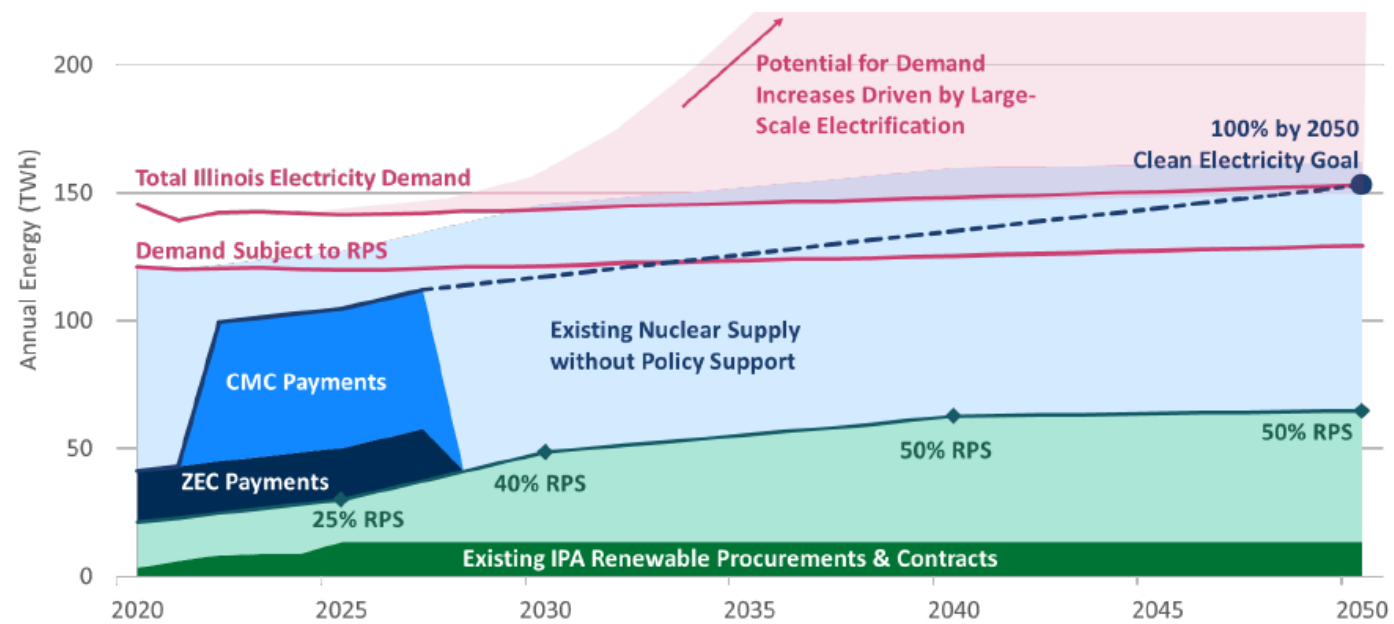


CLIMATE  
AND  
EQUITABLE  
JOBS ACT  
(CEJA)

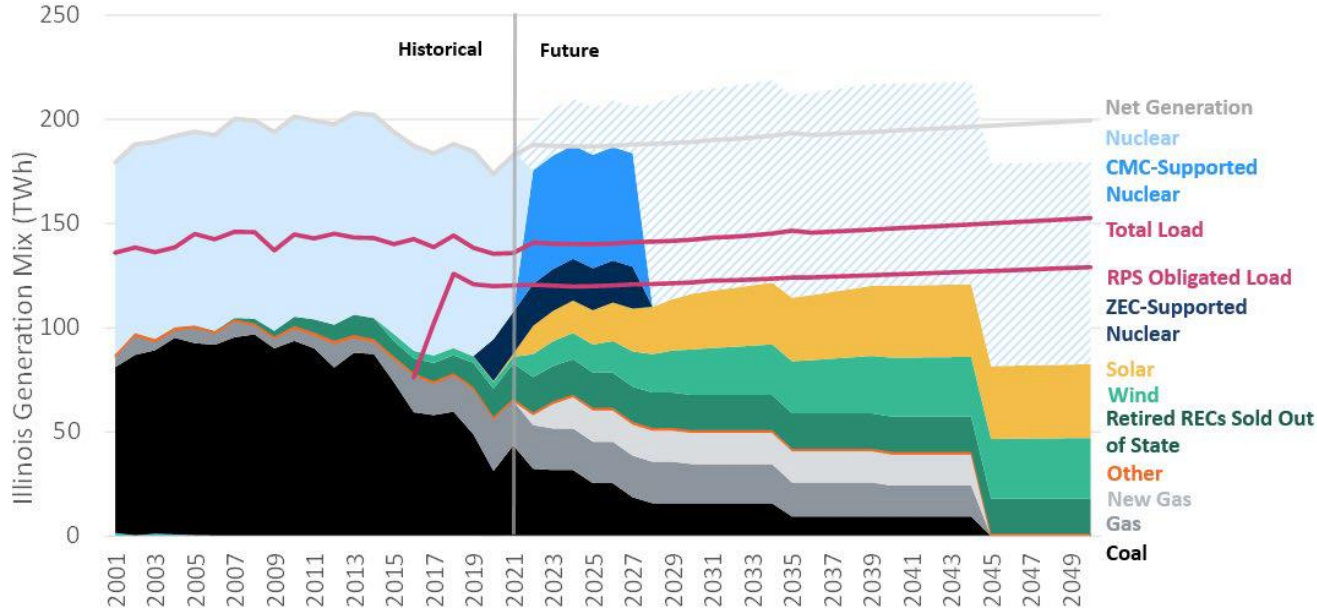
# HISTORICAL GENERATION MIX



# POTENTIAL DEMAND INCREASES



# ENERGY SUPPLY & DEMAND OUTLOOK

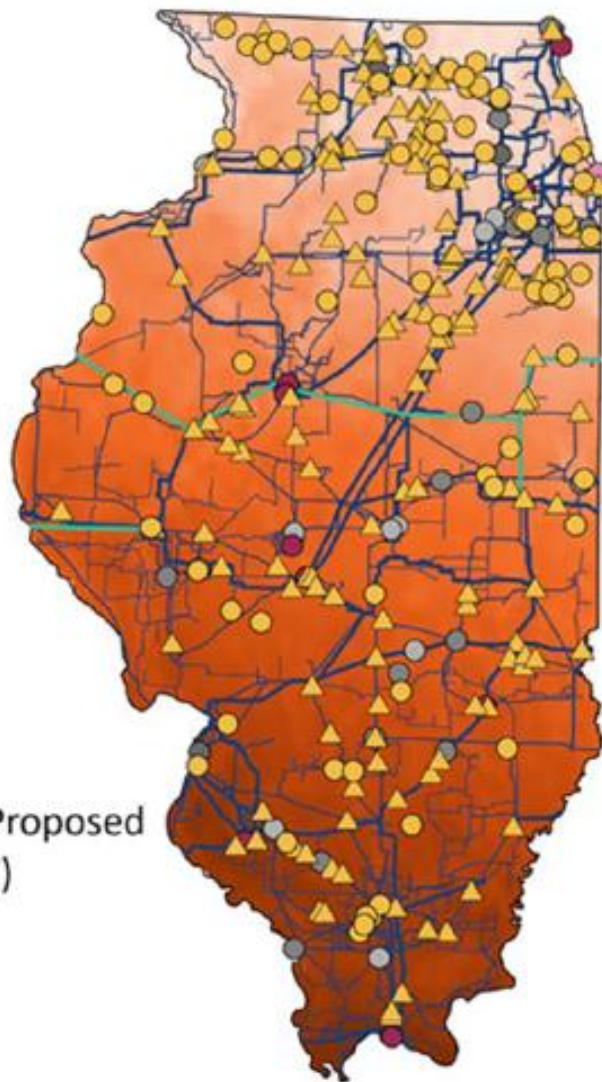
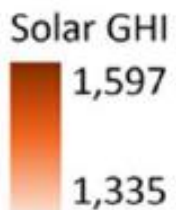




### Solar

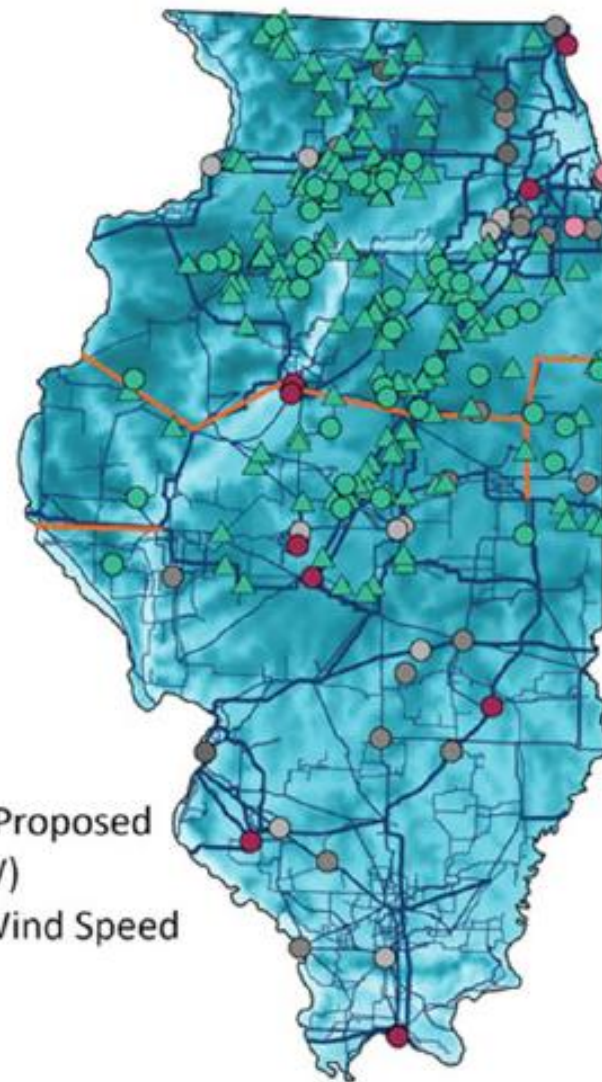
- Solar Plants
- ▲ Solar Queue
- Wind Plants
- ▲ Wind Queue
- Retiring Plants
- before 2030
- 2030
- 2035
- 2040
- 2045
- Transmission Lines
- Voltage (kV)
- < 100
- 100-161
- 220-287
- 345
- >= 735

MISO Proposed (345kV)



### Wind

- MISO Proposed (345kV)
- Average Wind Speed (m/s)
- 7.9
- 5.6



# RENEWABLE ENERGY ACCESS PLAN

CEJA added to the Illinois Public Utilities Act, new Section 8-512, which required the Commission to open an investigation to develop and adopt a renewable energy access plan (REAP).

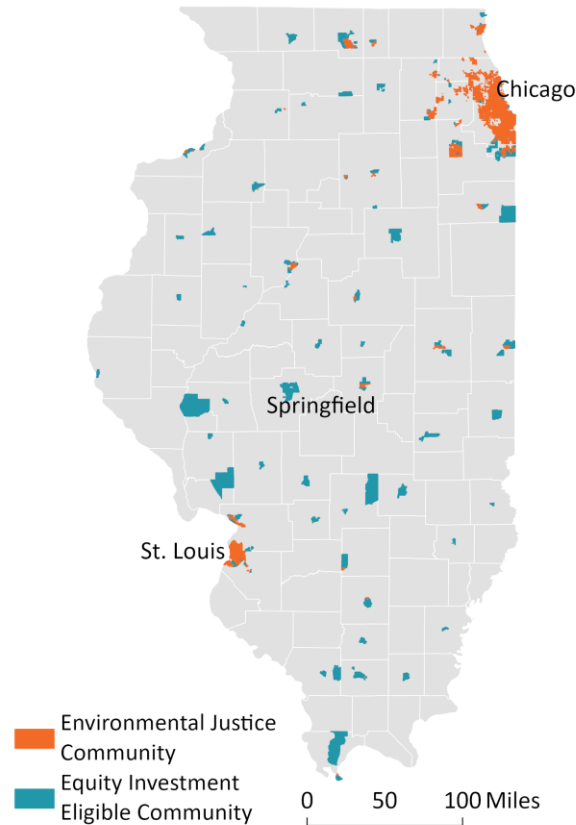




# THE COUNTIES CODE

- Public Act 102-1123 (January 27, 2023) amended Section 5-12020 of the Illinois County Code, 55 ILCS 5/5-12020.
- authorizes counties to establish siting standards for commercial wind energy facilities and/or commercial solar energy facilities
- prohibits counties from adopting more restrictive requirements than set forth in the statute
- Includes requirements for decommissioning facilities, setback distances, blade tip heights, drainage plan requirements, and consideration and use of agricultural lands.
- Counties with existing zoning ordinances that conflict with the Section 5-12020 to amend their zoning ordinances to comply.

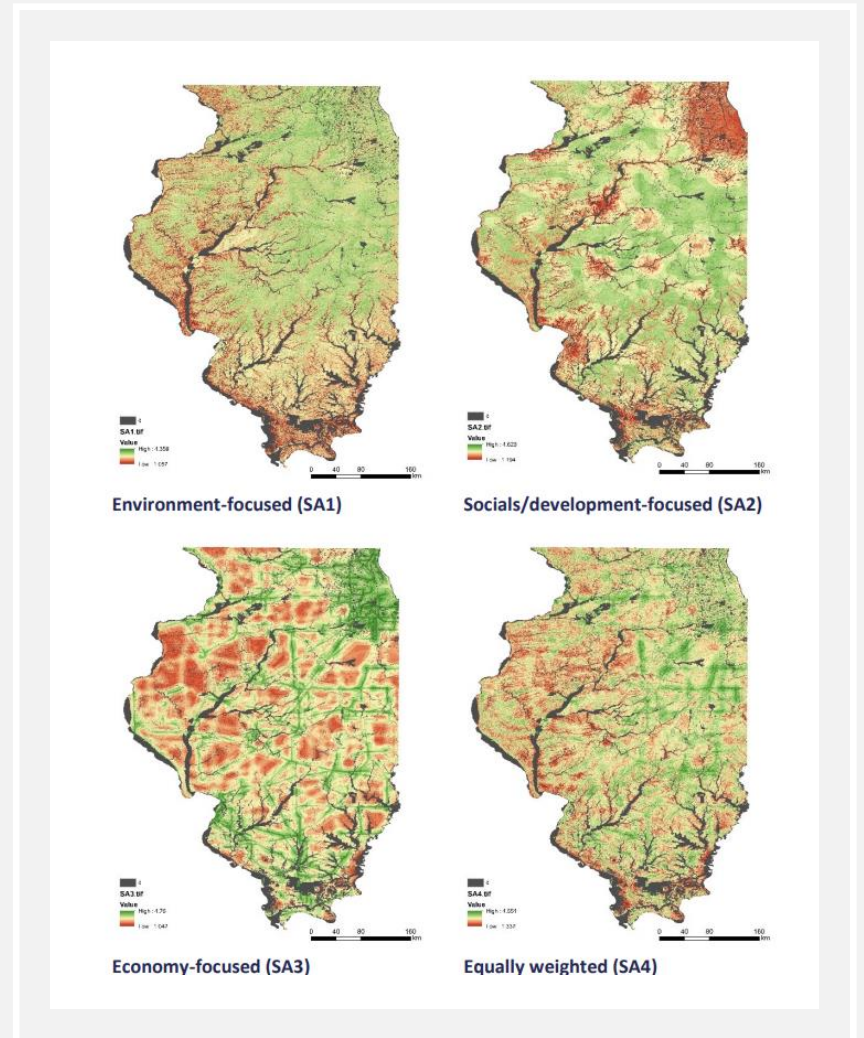
# EQUITY AND ENVIRONMENTAL JUSTICE COMMUNITIES



- **Environmental Justice (EJ) Communities:**
  - Illinois Power Agency methodological framework established in the Long-Term Renewable Resources Procurement
  - Uses USA EPA tool EJ Screen
  - Speedy emissions reductions, electrification investment, incentives carve-outs
- **Equity Investment Eligible Communities:**
  - “geographic areas throughout Illinois which would most benefit from equitable investments by the State designed to combat discrimination.”
  - Many incentives available to EJ communities under CEJA are also available to equity investment eligible communities.

# SEDAC

- Based at the University of Illinois at Urbana Champaign, the Smart Energy Design Assistance Center (SEDAC)
- Solar Suitability Analysis
  - Environmental Criteria: Solar Radiation, Slope Percentage, Aspect, Elevation
  - Social Criteria: Land Uses, Impervious Surfaces
  - Economic Criteria: Distance to Roads, Power Lines, Crop Productivity







## ILLINOIS DEPARTMENT OF NATURAL RESOURCES

- Works with developers and local and state government to ensure that impacts to protected natural resources are avoided or minimized
  - Incidental take permits
  - Structural recommendations
  - Illinois Natural Heritage Database
- Advises developers and counties to develop solar facilities that enhance Illinois natural areas by advising them to include native pollinator habitat as part of their project design.

# CONTACT

Kate McCormick  
Assistant Director, Policy  
Illinois Commerce Commission  
[Katharine.mccormick@illinois.gov](mailto:Katharine.mccormick@illinois.gov)